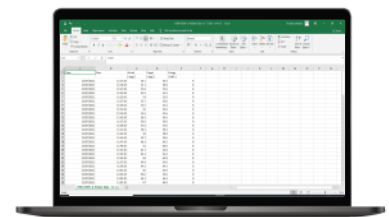




# Data Logging Software Manual

## G - Viewer



The G-Viewer allows you to display oven data into both graphical and numeric presentation form from either Incubators, Ovens, Drying Cabinets and Waterbaths. All data is transferred from the device into any PC via the front USB socket.

### Step 1. Install Software

Plug in USB with G Viewer.exe  
You can run the software direct from the USB, or alternatively drop the icon onto the desktop of your local machine and the firmware will copy across.

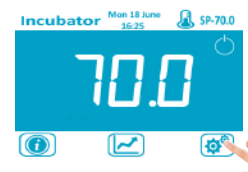
Supported Operating Systems:

- Windows 7 SP1 (x86 and x64)
- Windows 8.1 (x86 and x64)
- Windows 10 version 1507 (x86 and x64)
- Windows 10 November Update version 1511 (x86 and x64)
- Windows Server 2008 R2 SP1 (x64)
- Windows Server 2012 (x64)
- Windows Server 2012 R2 (x64)

### Step 2. Configure Device

On your device, you need to configure the File Export name and the sample rate of logging. The export name should be saved as either the name/number of the device, the location of the device, or as a process batch number. From the PC software, you can save information from multiple devices and batch numbers and then present them individually by selecting this file name.

Press Configuration Icon.



Enter Code 0381.



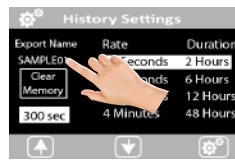
Press History Icon.



## Step 2. Continued

The 'Rate' and 'Duration' on the right of the screen are for the internal graphs so don't alter these for datalogging features.

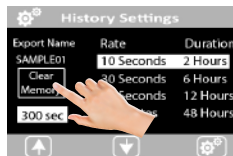
Press the Export Name.



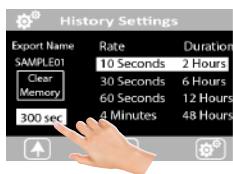
Using the Right, Left, Up and Down icons, change the name to the preferred details. You must ensure all 8 characters are assigned.



If you want to clear the current internal memory on the device, press the Clear Memory button.



To change the sample rate of the internal logging rate, use the Up and Down icons. You can change this from a 10 second sample to 300 seconds. The higher the sample rate, the longer the internal memory records. The device overwrites its oldest internal data when its memory is full and has 17000 stored samples.



The 10 seconds sample rate will store 48 hours of data.

The 300 seconds sample rate will store 60 days of data.

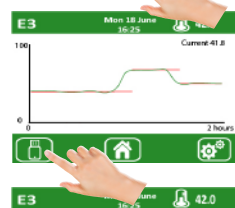
## Step 3. Downloading Data

From the main run screen, press the trend icon.



Insert USB into device. (See notes on USB).

From the trend page, press the USB icon.



Press Yes to export.



The data will automatically start to transfer to the USB.



Upon completion the unit will advise of a successful transfer. To go back to the original screen, remove the USB



## Notes on USB

When inserting a USB memory device into the oven to download data, please note that any previously download data with the same name will be overwritten.

To avoid this, go into the settings on the oven control system and change the export name. This will result in 2 separate files, and the PC will ask which file you want to display.

On importing data to the PC with the same file name, no data is overwritten, the transfer adds new data on to the previous file of the same name.

**Hint: Should you wish to provide batch data for an oven process.**

Go to the History Settings page, press Clear Memory and then modify the Export Name to the same batch number you log against. At the end of the process, download the data onto the USB. On G-Viewer, you can then simply display the data related to this batch from the drop down menu.

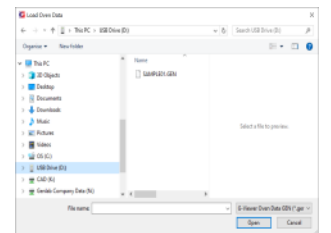
## Step 4. Import to Computer

Open the G Viewer Firmware

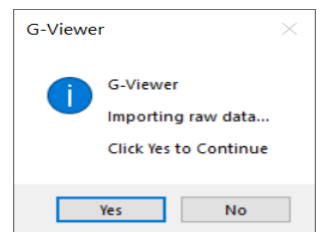
Select the USB Icon.



Select the USB drive and highlight the file you want to import.



Press Yes.

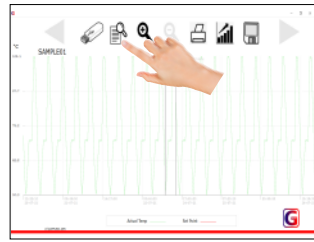


The data from the upload will automatically display on the screen.

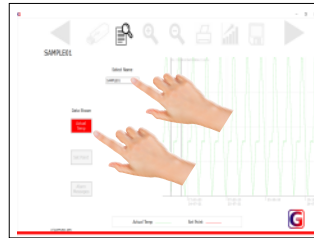


## Step 5. Viewing Data

Press the view data icon



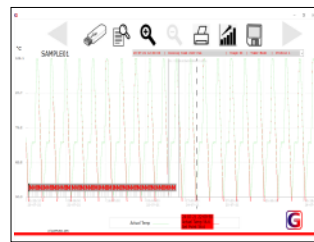
Select which data you wish to view from the drop down menu from previously saved data. Highlight what data you wish to view, you can enable or disable Actual Temp, Set Point Temp and Alarm messages depending on your preference



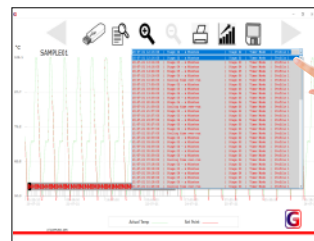
Press View Data Icon again to view the data screen.



From the data screen, the chart shows preference data requested on the previous screen. A time line automatically appears which you can slide using cursor controls. As the time changes, the values are displayed in the red box.



To view alarms, click on the drop box and all alarms are shown. Alternatively, highlight the cursor on this tag and scroll up and down on the mouse and the alarms scroll through the time line.



To zoom in and out of data, press the + or - key. When the data is zoomed in, you can scroll left to right with the icons.

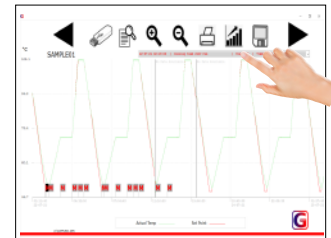


## Step 6. Understanding Data

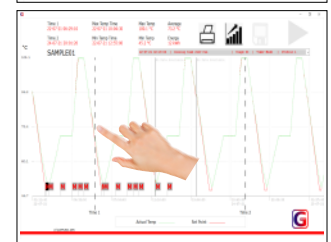


G Viewer calculates important information such as minimum, maximum, and average temperature between 2 time periods. It also confirms the energy used between these 2 time lines.

Press the Graph Icon.



The next click on the screen plots Time 1 and the second click plots Time 2. You can change the time interval by clicking around the time lines. Hold and slide the time line to change it. As the time line changes, the data changes to show the calculated data and energy between the 2 time lines.



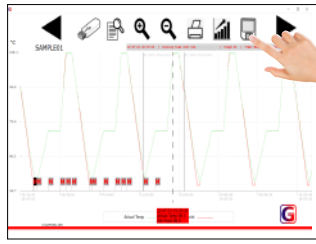
To return to the standard display screen press the graph icon again.



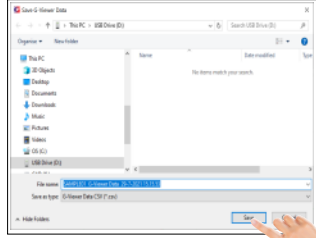
## Step 7. Exporting Data

Data can be saved into a standard form that can be viewed on alternative firmware such as Excel.

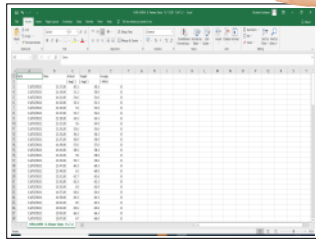
Press the Save Icon.



Choose the name you want to save under.



Open files to view in tabular format.



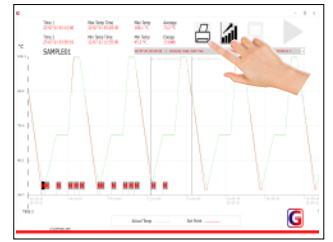
Hint, should data ever get corrupted due to USB being unplugged during data transfer, it may be required to delete the files. The files are stored under...



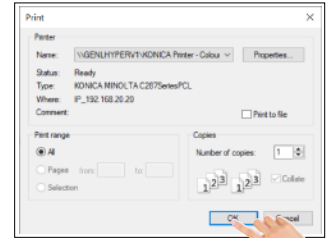
*C/G-Viewer/Processed/*

## Step 8. Printing Data

Screen data can be printed by pressing the Print Icon.



Select desired printer.



HINT, with a pdf printer installed, a pdf can be saved and emailed.

